

# Automated On-Line Analysis

## YSI 2900/2950

The Flownamics® SEG-FLOW® coupled with the YSI Biochemistry Analyzer provides automated, on-line analytical solutions for real-time analysis of a broad range of analytes. The SEG-FLOW draws microfiltered samples from 1 to 8 bioreactor vessels using the FISP® Cell Free Sampling Probe technology and delivers each sample to the YSI analyzer, or up to 4 analyzers in all. The SEG-FLOW system acquires and processes the YSI analyzer data to provide feed control options for each vessel. The SEG-FLOW's OPC technology provides seamless integration of the YSI data into any OPC-enabled SCADA or bioprocess management system for enhanced bioprocess monitoring and control.

### YSI 2900/2950 Interface Features\*

#### Automated YSI Status Checks

- Bottles: Buffer, Waste, & Calibration Standards
- Probe Calibration
- Modules & System

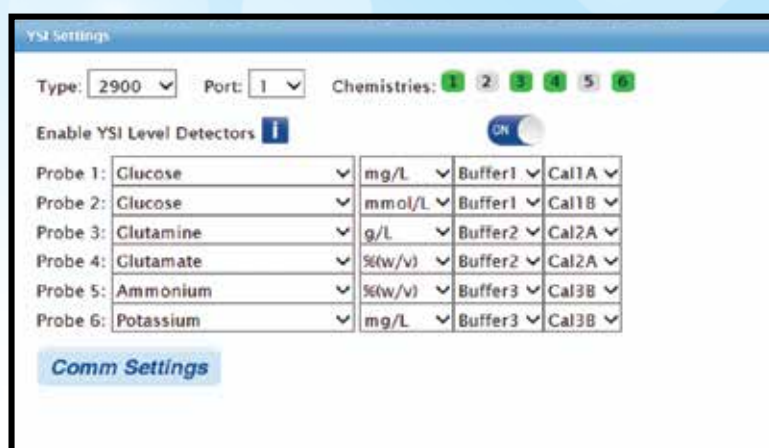
#### Automated YSI Functions

- Probe Specific Calibration
- Module Specific Measurement

#### Simple Device Configuration

- Activate Probes Independently
- Configure Probe Chemistry, Units, Buffer Location, & Cal Location Individually
- Optional Fluid Detector Activation

#### Sitini Module Not Required



\* Requires YSI version 2.5.1.71 or above  
Contact your local authorized YSI representative  
for updating if required.

### SEGFLOW® Features

#### Versatility

- Patented Segmented Sampling Technology, Rapid and Accurate Results
- User-Defined Sample Size (250 ul - 15 ml)
- Sample From 1 to 8 Vessels (streams) at a Time
- Withdraw Sample Using FISP® Cell-Free Sampling Probes
- Analog Inputs & Outputs, RS-232 Ports, TCP/IP

#### Internal Web Server

- Flow-Web™ Controls System Internally
- Log Data & Information for Each Vessel or Stream
- View and Control from any PC or Smart Phone

#### Low Maintenance and Operating Cost

- Single-Use Fluid Path from Vessel to Analyzer

#### Sample Prep and Dilution Available



### Capable of Manual & Automated Sampling Simultaneously

# FlowWeb™

User friendly with minimal training needed

## Minimal Setup

- Assign vessel or stream ID numbers
- Assign system and vessel settings

## Logs and Plots Data

- Data logged in a spreadsheet
- Present data in chart or trend format
- Data Presented in User Defined Units

## Automatic Rinse/Sterilization Cycle

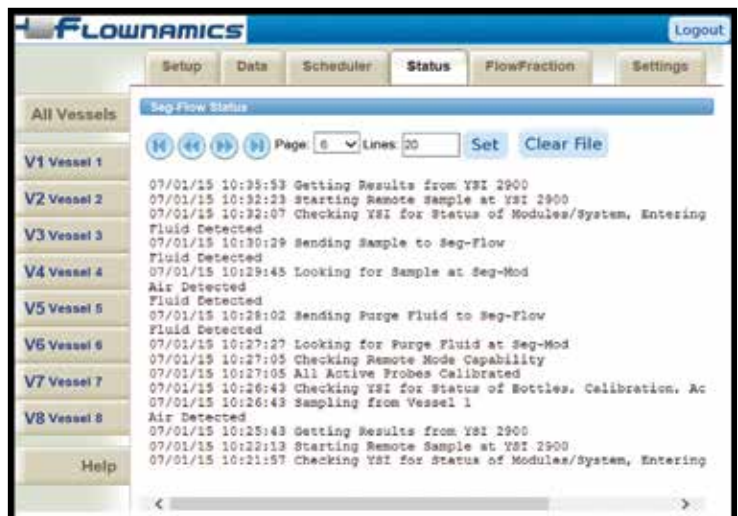
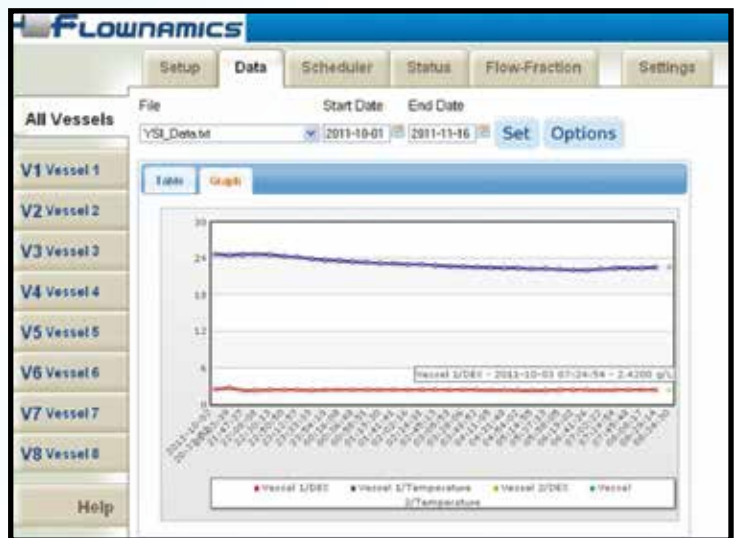
- Sample line is cleaned and / or sterilized after every sample

## OPC Connectivity

- OPC Server package available
- Exports analytical data to any OPC-enabled SCADA or data historian
- Enhances process monitoring and control

## 21CFR, Part 11 Compliant

- Every event monitored and time-stamped
- Administrative and technical controls easily programmed



4902 Pflaum Rd • Madison WI 53718

P - 608.240.1604 • F - 888.250.8197

Toll Free **800-932-6989**

[contact@flownamics.com](mailto:contact@flownamics.com)

[www.flownamics.com](http://www.flownamics.com)

US Patent No. 8,549,934

Flownamics, Seg-Flow, FISP, & FlowWeb are all trademarks of Flownamics Analytical Instruments, Inc.  
YSI is a trademark of Xylem Inc.

**NOTE:** Product literature is available for Flownamics® In-situ Sampling Probe [FISP®] which is used for withdrawing a cell-free sample from a fermentation vessel or bioreactor. FISP® fits into the vessel's side or top port and is sterilized in-situ. Models are available for bench top up to large production scale vessels. See our Website for more info or call to request literature.